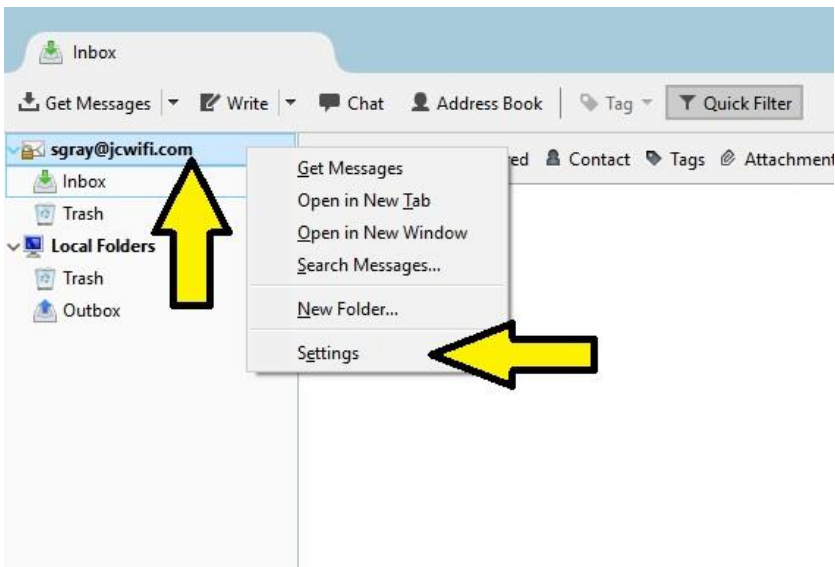
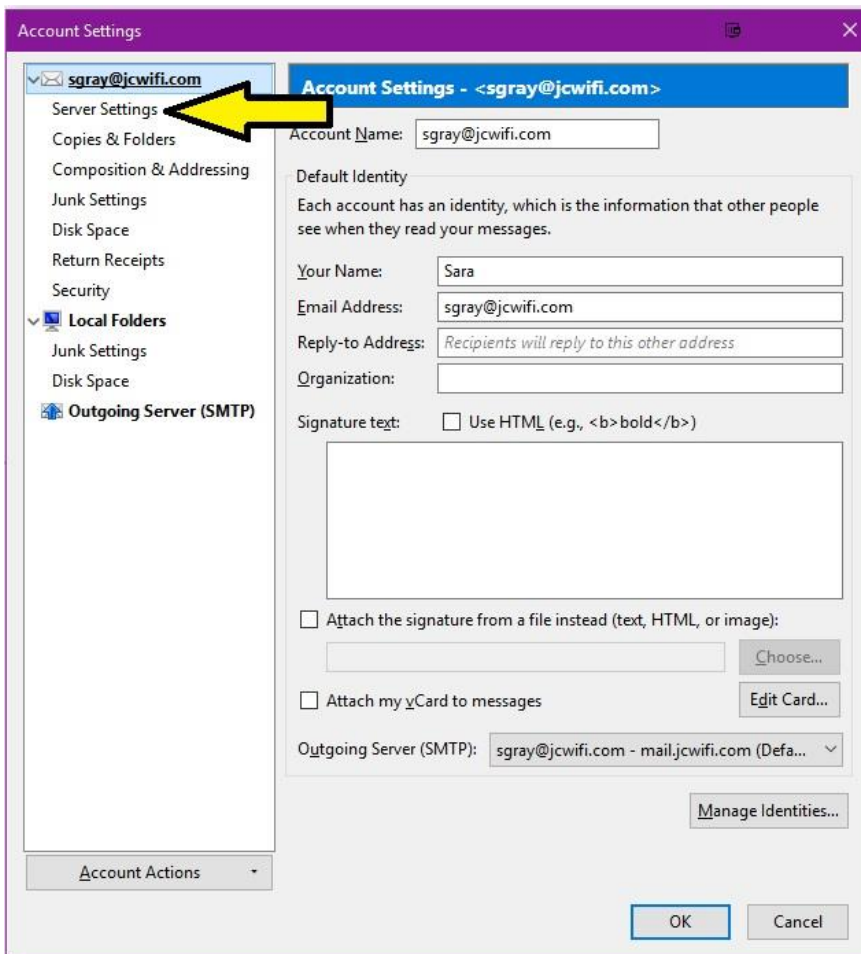


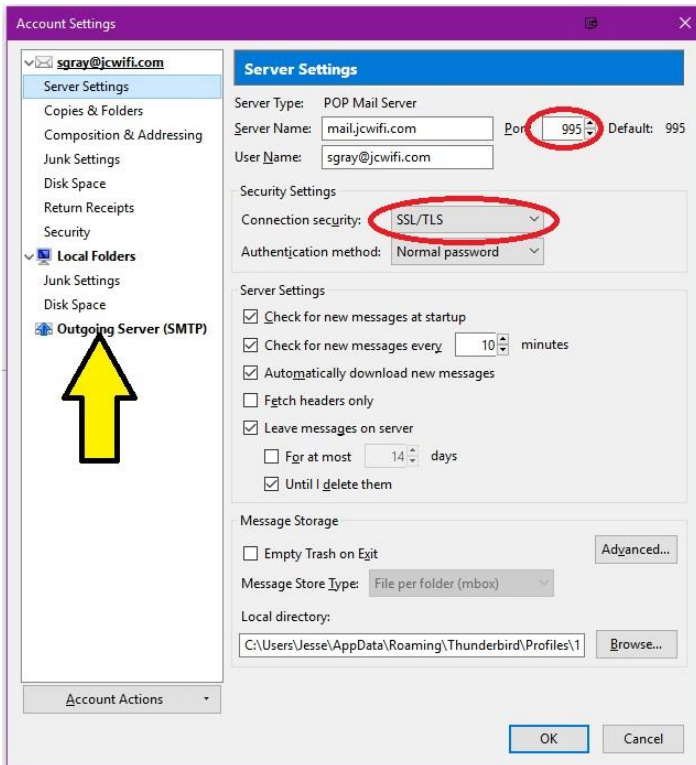
# Thunderbird Email Setup



Right click on your email account that is listed along the left side of the screen and click on Settings.



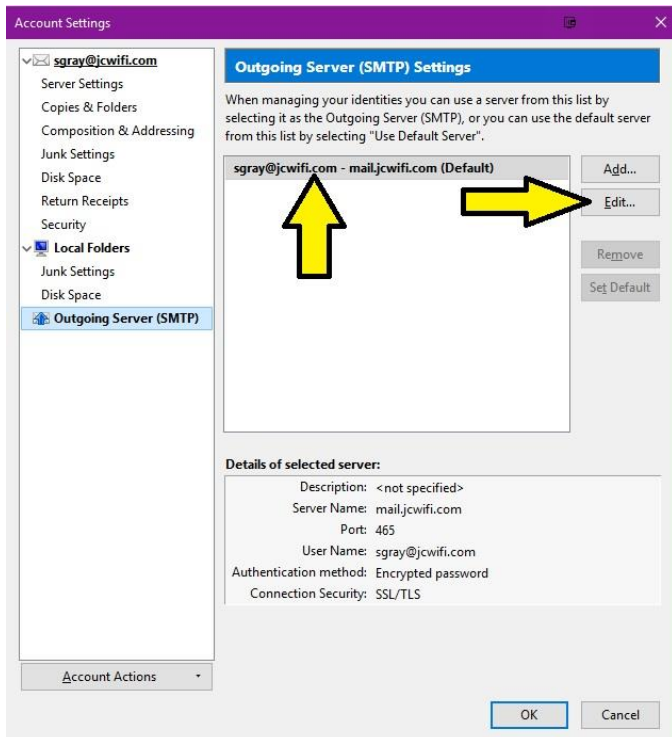
On the left side, click on Server Settings.



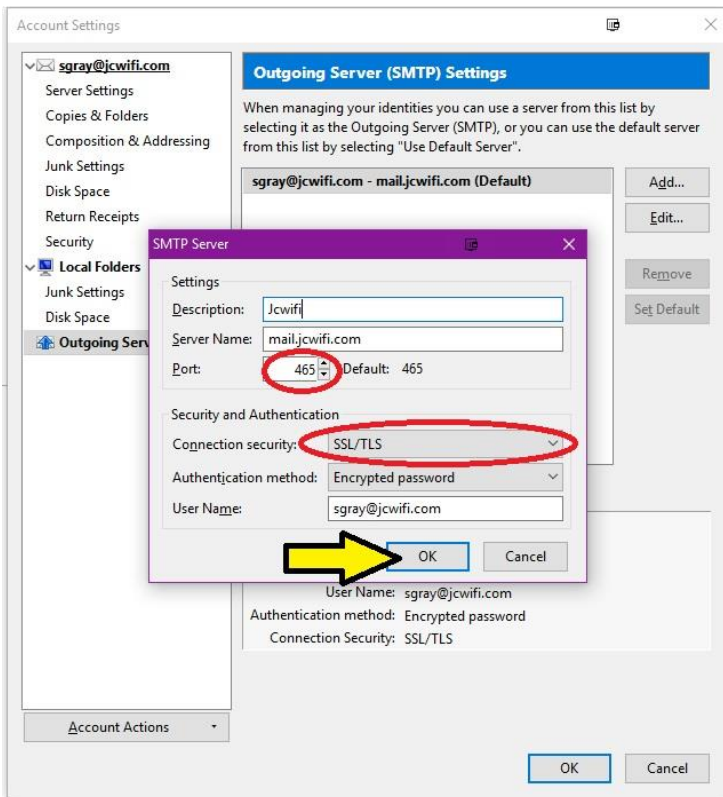
Change the following information

1. Port: 995
2. Connection security: SSL/TLS

Then click on Outgoing Server (SMTP) on the left side.



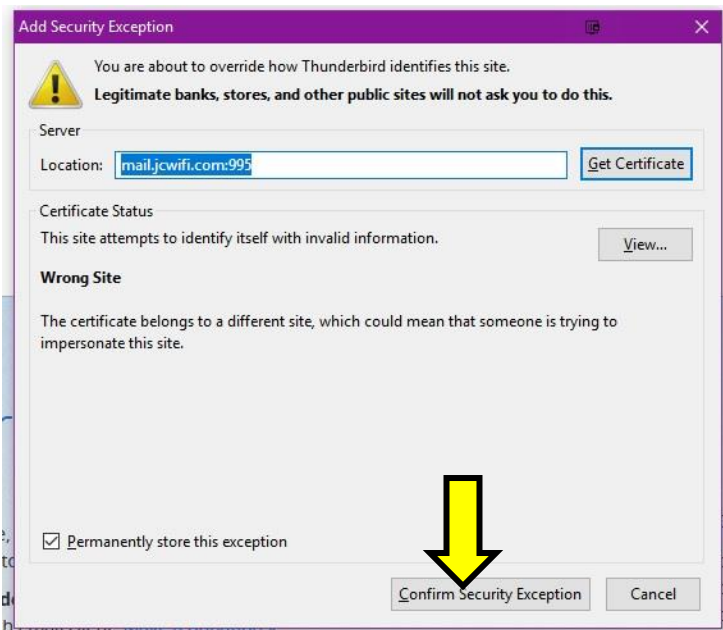
Click on the outgoing mail server and then click on Edit.



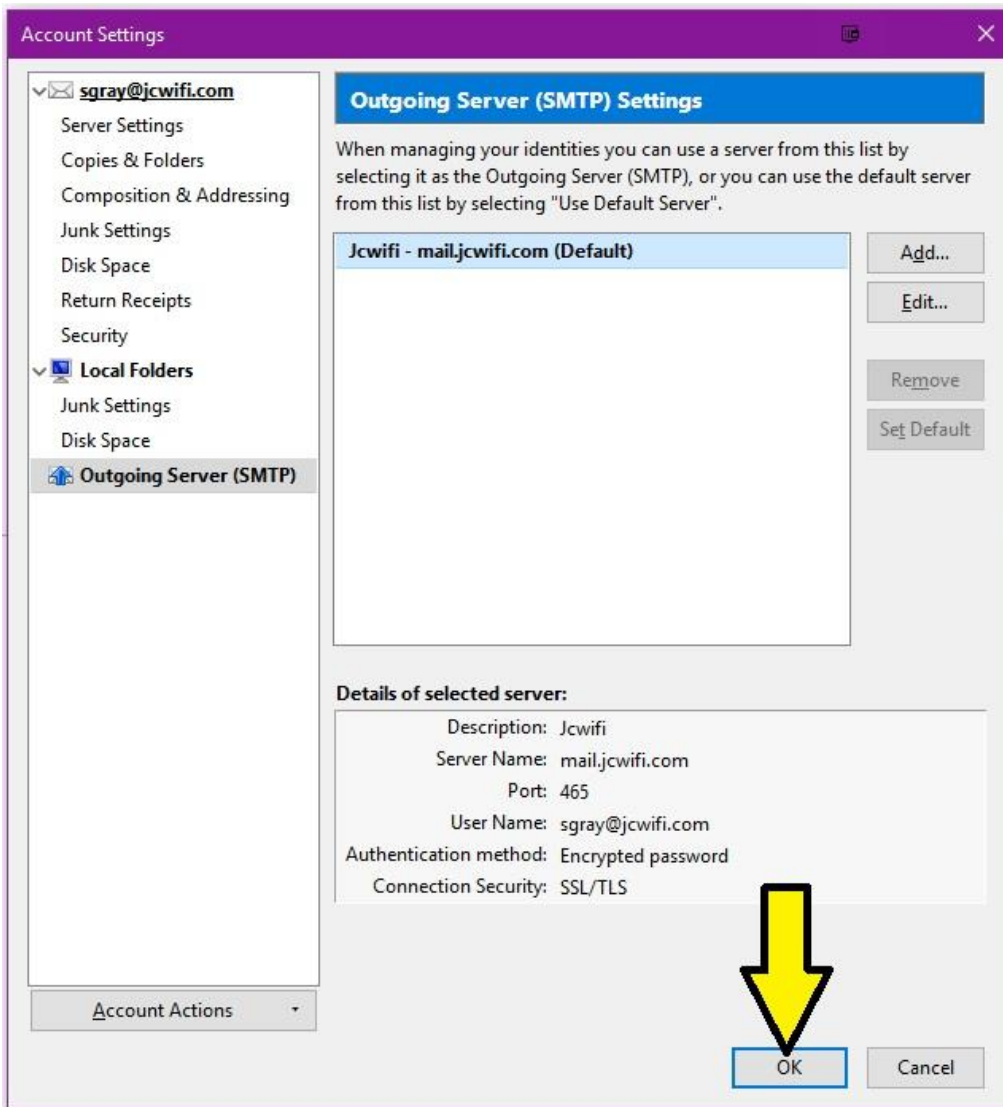
Change the following information

1. Port: 465. If 465 doesn't work, try 587.
2. Connection Security: SSL/TLS

Then Click OK.



Click on "Confirm Security Exception" to accept the certificate.



Click OK to save all the changes and exit back to the main screen.