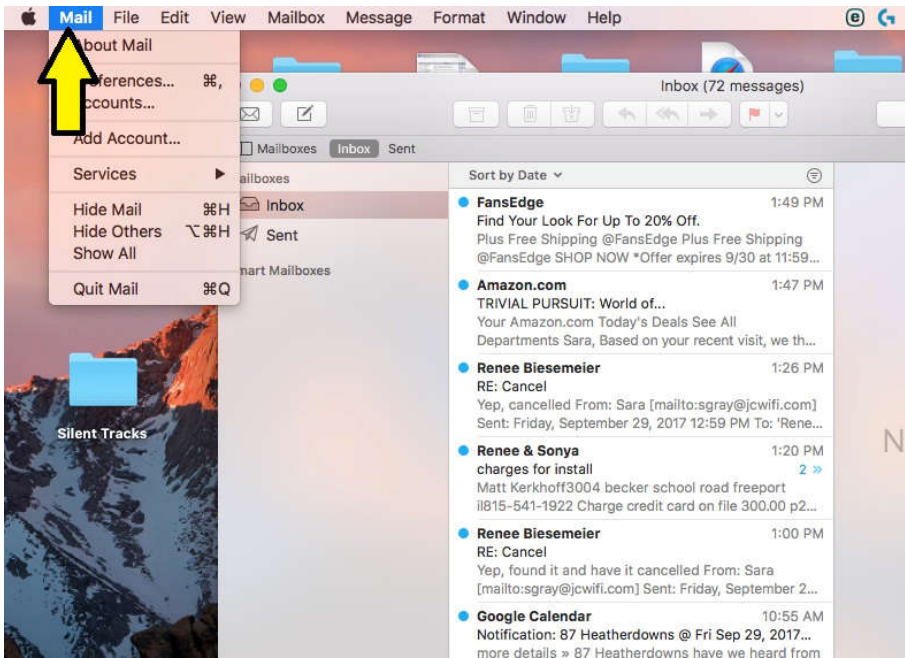
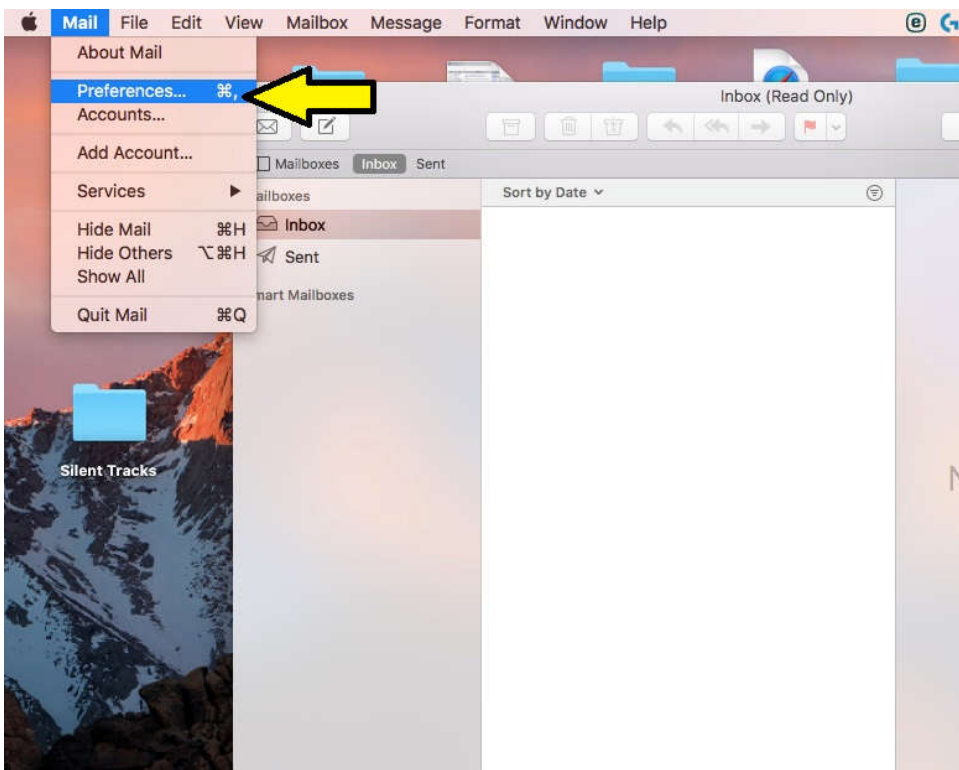


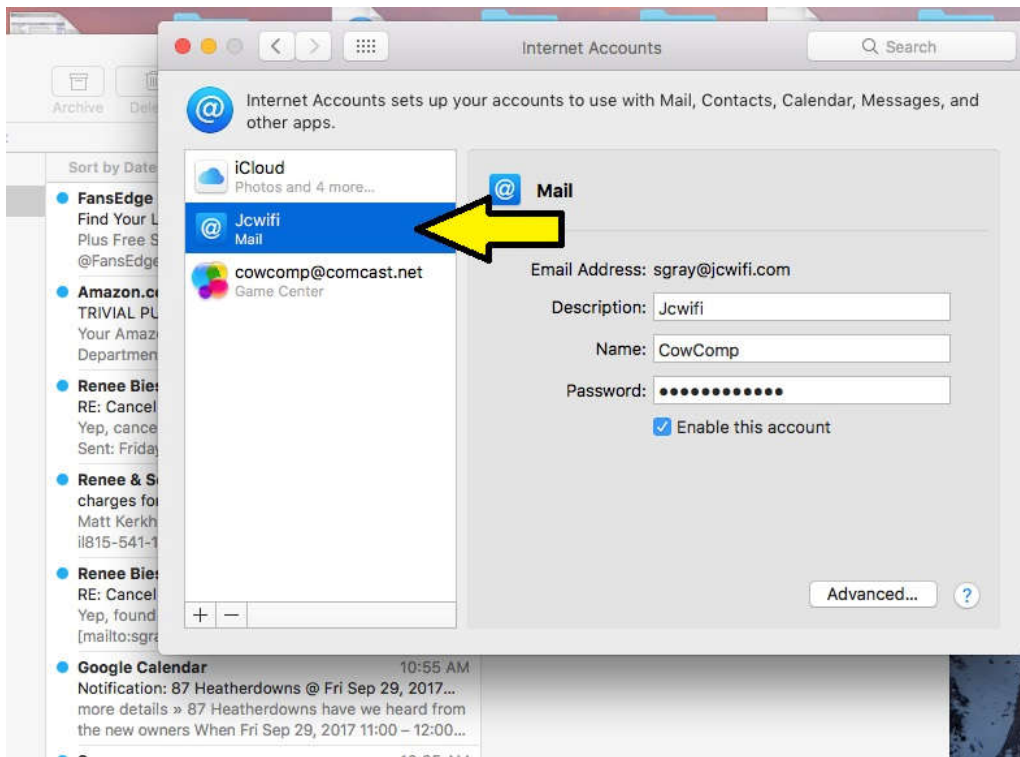
# Mac Mail Email Setup



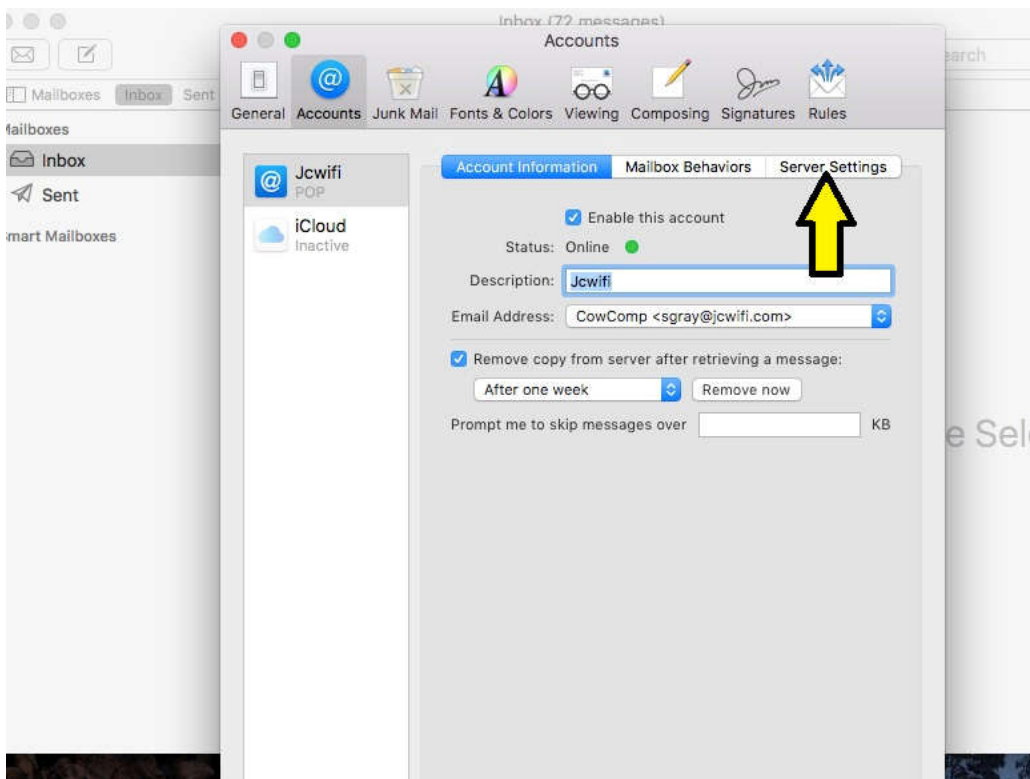
Click on **Mail**.



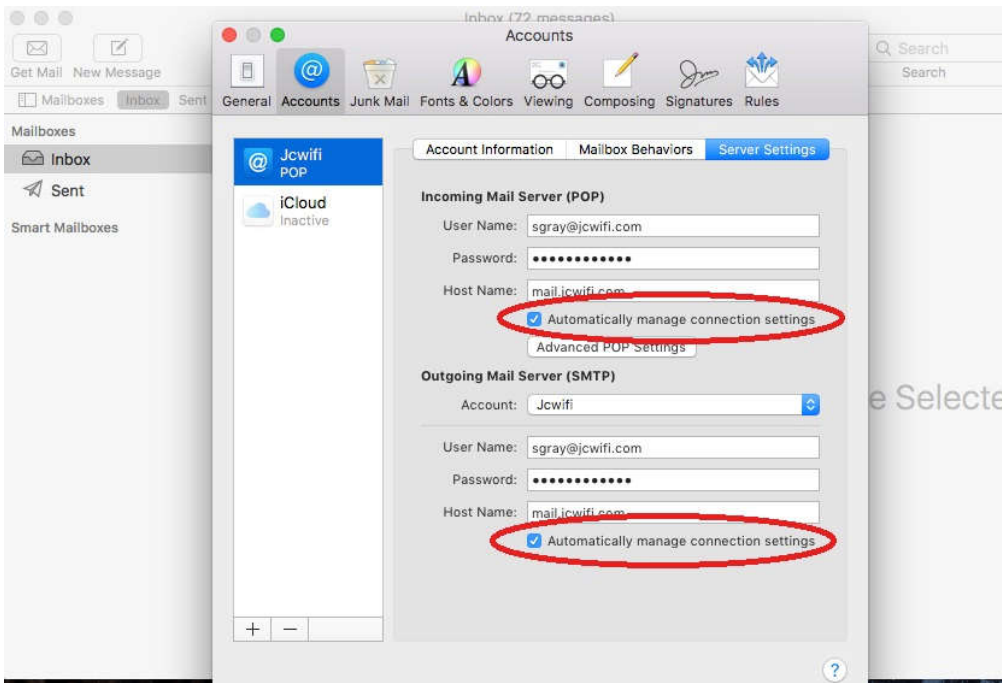
Click on **Preferences**.



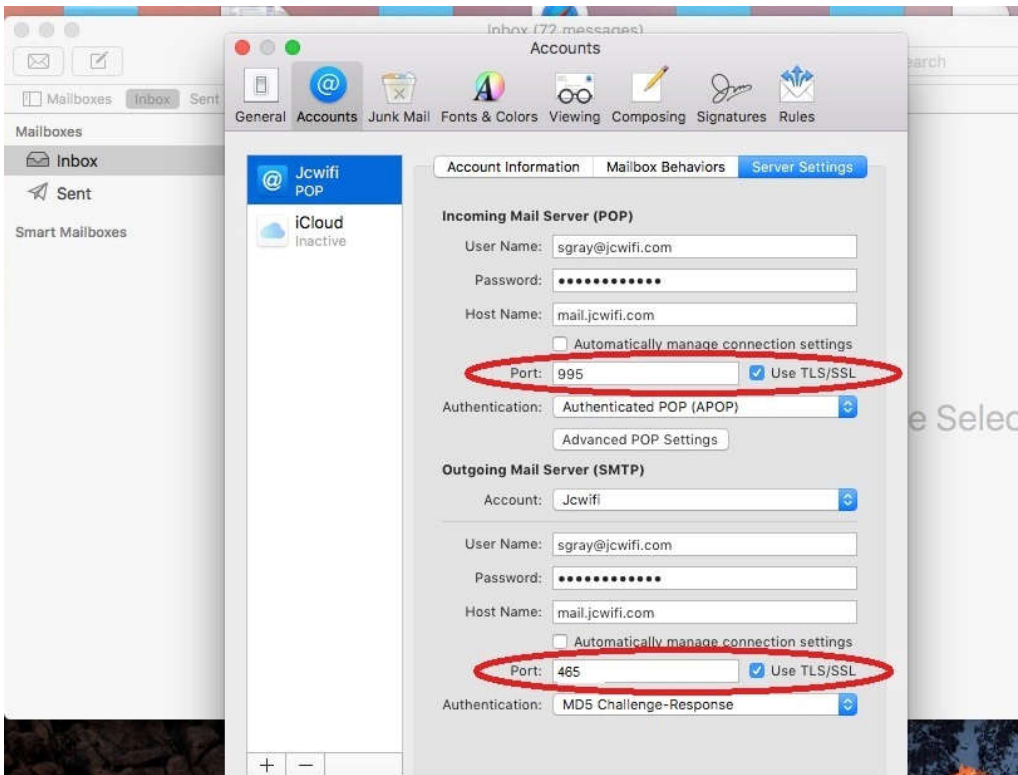
Choose your account.



Click on **Server Settings**.

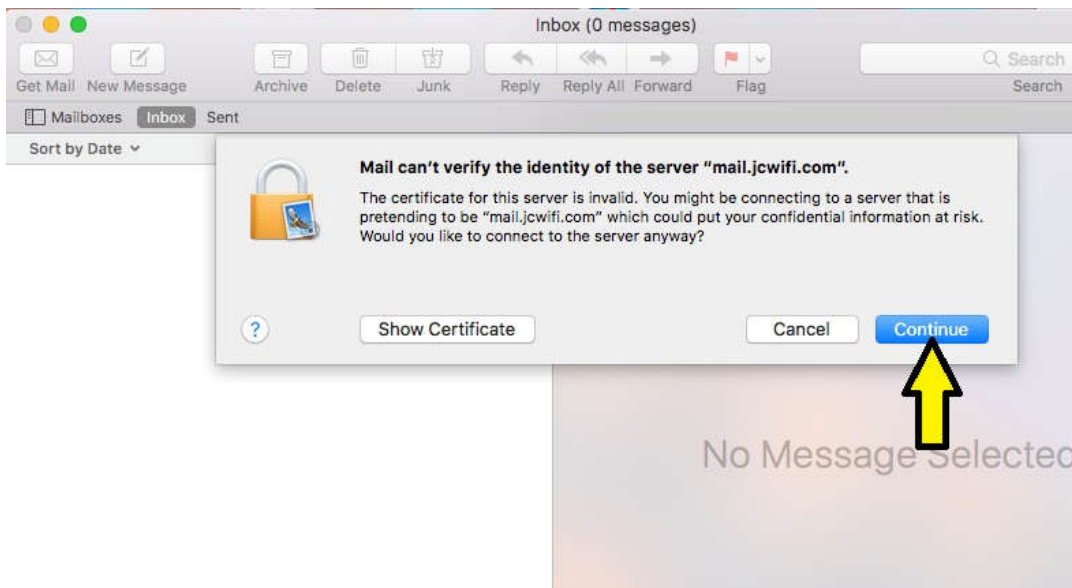


Uncheck the boxes next to “Automatically manage connection settings”

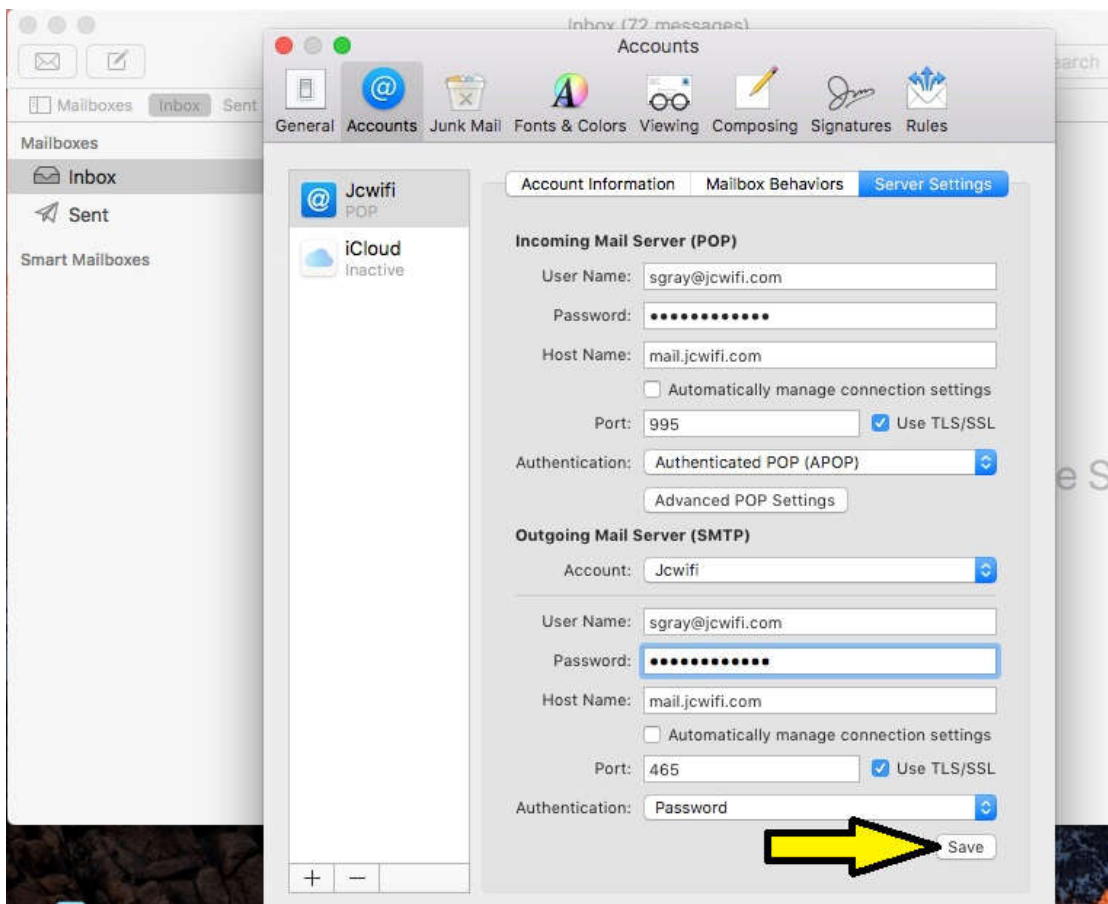


Make the following changes:

1. Incoming mail server Port: 995
2. Check “Use TLS/SSL”
3. Outgoing Mail Server Port: 465
4. Check “Use TLS/SSL”



Click **Continue** to accept the certificate.



Click **Save** at the bottom.